

Reserved for the **Classing Classic Ram Sale 5th September 2016** Incorporating **World Merino Insight**

" The fibre & carcass exhibit all the great attributes that put **Ridgway Advance & Classic sales** in the spotlight in the first place. I have no doubt this is the best team David, Karen & Devon have ever fielded at any **Classic Sale**. Many **Screamers**" commented **Bill Walker**

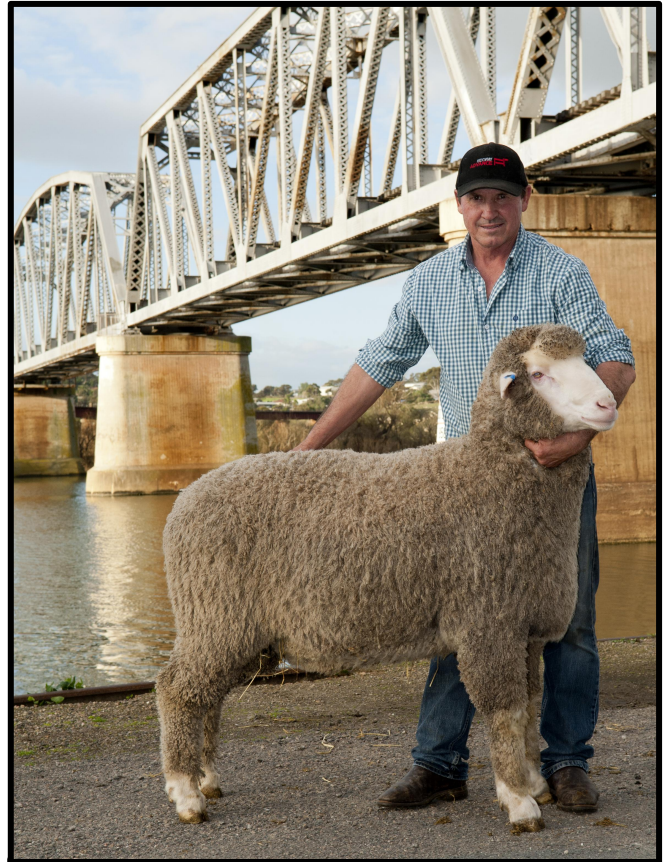
Two Sires Leading the Ridgway Advance Team



RA R022 June Drop ET bred
Sire RA080

18.6 micron, 2.5 S.D, 13.6 CV & 100 % Comfort Factor
Carries Double Copy of the Poll Gene 'PP'

RA 0022 is not a freak of nature but a Well Bred Top Sire with his outstanding Pedigree
(Four generations of rich white wool)



RA Y 100 Sire RA082
May/June Drop

18.4 micron, 2.6 S.D, 14.1 CV & 99.8 % C.F.
Carries Double Copy of the Poll Gene 'PP'

'Very Striking Ram with Perfect Conformation'

Tag	Sire	Poll Gene	Age	Micron	S.D.	C.V.	%>30u	Weight
R 022	RA 080	PP	June	18.6	2.5	13.6	0.0	115 kg
Y 100	RA 082	PP	May/June	18.4	2.6	14.1	0.2	115 kg
Y 103	RA 082	PP	May/June	19.0	2.7	14.3	0.2	117 kg
W 133	GP 891	PP	April	17.7	2.9	16.5	0.6	120 kg
W 071	WP 8	N/A	April	19.8	3.3	16.6	0.8	107 kg
B 003	RA 080	PP	June	19.1	2.5	13.0	0.0	107 kg
R 025	RA 080	PP	June	19.3	2.7	14.1	0.3	107 kg
R 028	RA 082	N/A	June	18.8	2.6	14.0	0.2	106 kg
R 043	RA 080	N/A	July	19.5	3.1	16.0	0.4	93 kg
Or 002	RA 080	PP	Spring drop	19.4	2.8	14.5	0.6	93 kg
Or 040	WP 8	N/A	Spring drop	18.2	2.9	16.1	0.8	90 kg
Or 003	RA 080	PP	Spring drop	18.2	3.2	17.6	0.5	100 kg
W 001	RA 080	N/A	April	19.5	3.0	15.3	0.8	126 kg
Y 007	RA 080	PH	May/June	19.9	2.7	13.8	0.2	117 kg
W 104	RA 003	N/A	April	20.4	3.1	15.3	0.8	111 kg

Tested by Classings Laboratory / Note Different Ages

David & Karen Ridgway Ridgway Advance Poll Merino Stud
4363 Emu Flat Rd., Senior Bordertown SA 5268 08 8754 2028 / 0409 408 263

**RIDGWAY
ADVANCE** 
Perfectly Balanced Merino's